



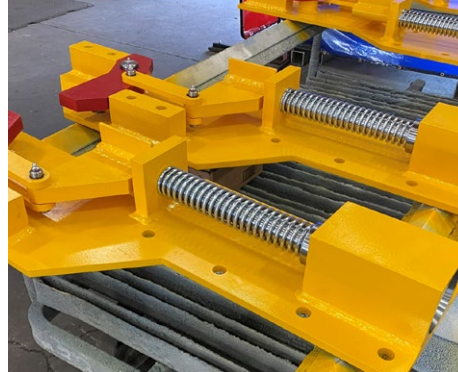
BENDER CCP

ENGINEERED ROTATING EQUIPMENT SPECIALISTS

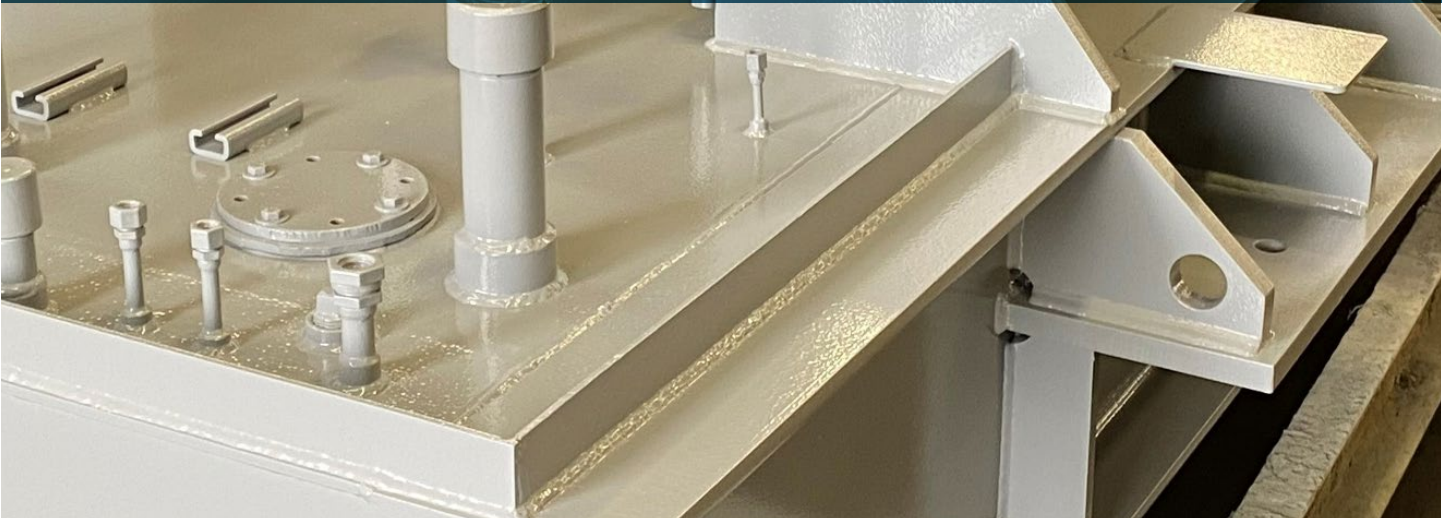


UNICO MECHANICAL

ENGINEERED ROTATING EQUIPMENT SPECIALISTS



METAL FABRICATION & TOOLING SERVICES



A Premier Provider of Machining, Tooling and Metal Fabrication Services to Western North America.

Our team brings more than 40 years of expertise to customers in Aerospace, Power Generation, Ship Repair, Petrochemical and other markets. Bender CCP utilizes the most advanced shop manufacturing practices in six facilities that span the Pacific coast. Bender CCP is dedicated to completing each job, large or small to the highest standards of quality to ensure on time delivery of each project.



Aerospace Metal & Fabrication Services

Bender CCP is a premier tool and steel manufacturer that has grown to become one of the top metal fabrication and machining companies in the aerospace industry. We are regarded as having one of the most uniquely experienced and qualified aerospace tooling work forces in the western region.

Long-time customers, Boeing, Pacific Aerospace, SpaceX and others know they can count on our unmatched workmanship, quality and service level on projects ranging from welding/fabrication, machining, assembly and inspection for various jigs, layup mandrels, master gages, drill fixtures, form blocks, injection molds, Reign Transfer Molding (RTM) and holding fixtures.

At our Kent, Washington facility you will find over 30,000 square feet of heavy fabrication, dedicated manufacturing and office space for aerospace tooling needs. All stages of the process required to successfully complete an aircraft tooling program is processed under one roof in our control.

Some of our capabilities:

- Assembly Jigs, Drill Jigs, Weld Fixtures
- Standard Tools, UT Tools, Gauges
- FAJ, ME, TME, DJ, OHME, FME, PME
- Mechanical equipment and apparatus

Inspection & Load Testing Services

- Certified Equipment and Weights to 300,000 lbs
- Enclosed Temperature Controlled Inspection Areas
- (3) FARO Arm CMM (9')
- (2) FARO Laser Trackers
- Calibrated Inspection Equipment



Welding Capabilities

Bender CCP employs ABS, ASME, AWS, NAVSEA & WABO certified welders in the following processes:

- GMAW – MIG
- FCAW - Flux Cored (Dual Shield)
- SMAW – Stick
- GTAW - TIG (Heliarc)
- SAW – Submerged Arc Welding
- Steel / Stainless Steel / Aluminum and Brass Alloys



<p>Complete Heat Exchanger Services</p>	<ul style="list-style-type: none"> • Replacement Tube Bundles • New TEMA Shell & Tube Fabrication • Repairs • Custom Designs
<p>ASME Pressure Vessels</p>	<ul style="list-style-type: none"> • Engineering • Welding • Machining • Repairs
<p>Process Piping and Skid Mounted System</p>	<ul style="list-style-type: none"> • Filtration Systems • Skids • Pipe Assemblies • Engineering/Drawing
<p>In-House Boiler Fabrication and Repairs</p>	<ul style="list-style-type: none"> • Custom Boilers • De-aerators • Boiler Piping • Tubesheets

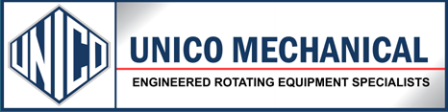


CERTIFICATIONS & QUALIFICATIONS

<p>Quality Management System</p>	<ul style="list-style-type: none"> • ISO 9001-2015 QMS Certified: Certification • NAVSEA Standard Item 009-04 Compliant • QMS Audit Compliant - Part of San Diego Ship Repair Association
<p>Safety Management System</p>	<ul style="list-style-type: none"> • OHSAS 18001 Compliant
<p>Welding and NDT</p>	<ul style="list-style-type: none"> • Level III Examiner oversight • NAVSEA SWRMC approved IAW MIL-STD-248 • Qualified & Certified American Welding Society (AWS), American Society of Mechanical Engineers (ASME), Boiler and Pressure Vessel Code (BPVC) and NAVSEA MIL-STD-248 • R, U, & S Stamp Holder
<p>HVOF Thermal Spray</p>	<ul style="list-style-type: none"> • NAVSEA Approved Facility and Procedures - MIL-STD-1687-A and MIL-STD-2138 for Thermal Spray Repairs and New Component manufacturing • American Bureau of Shipping (ABS) Approved Facility and Procedures
<p>The Association of Materials Protection and Performance (AMPP)</p>	<ul style="list-style-type: none"> • Corporate Member, Council of Facility Owners (CFO) • NBPI Certified Coatings Inspector • Level III Certified Coatings Inspector



323-232-2371
benderccp.com



707-745-9970
unicomechanical.com

SHOP LOCATIONS: Benicia, CA • Corona, CA • Kent, WA • San Diego, CA • Vernon, CA